

Natural colored Smooth stone coating 厦光岩彩石AME型·光面石



产品简介：

以优质氟硅乳液为粘结剂，配以优质颜料和高性能助剂，采用“水包水”微胶化造粒技术研制而成，该产品通过一次喷涂，既可创造出逼真的石材纹理，材质感和立体感是普通真石漆无法比拟的，是最具性价比的花岗岩、大理石替代产品。

Product features:

High quality Silicon fluoride emulsion Binder, together with the high quality pigments and high performance additives, a "water water" of micro-plastic granulation technology, designed and developed, the product through a spray coating, which can create a realistic stone texture, texture and verisimilitude is common than real stone paint, granite, marble is the most cost-effective alternative.

性能特点：

- 仿真度可达100%
- 优异的耐水性
- 优异的储存稳定性
- 单次喷涂，施工简单
- 优异的耐候性
- 纯水性，绿色环保
- 优异抗沾污性
- 无机颜料，不褪色
- 与保温匹配性好

Features:

- Simulation of up to 100%
- Excellent water resistance
- Excellent storage stability
- Single spray
- Excellent weatherability
- Water, green
- Excellent resistance to stains
- Inorganic pigments, color
- And holding a good matching



适用场所：

适用于高档商住楼、酒店、写字楼、政府工程、高层建筑等高档建筑物，非常适合外保温墙面上，以代替传统石材。

Application of places:

All kinds of Interior and exterior wall decoration, fully decorated stone rough surface stones and fire effects.

技术参数：

基料：氟硅聚合物乳液。
颜色：样板、色卡或提供来样。
产品特征：水溶性、多彩颗粒。
干燥时间：表干6小时，重涂时间12小时，实干48小时。（温度25℃，相对湿度80%）。
理论耗漆量：0.40~0.80kg/m²，实际视基面粗糙程度、施工方法、花型不同有所差异。

Technical parameters:

Base material: fluoro silicone polymer emulsions
Color: model, color cards or provide sample
Product features: water solubility, colorful particles
Drying time: dry for 6 hours, Recoat time 12 hours work for 48 hours. (Temperature 25℃, relative humidity 80%)
Consumption of paint: 0.40-0.80kg/m², but the actual surface roughness, construction methods and designs varied

施工：

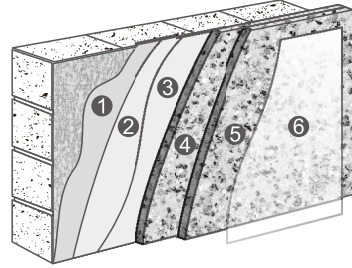
施工方法：专用喷枪喷涂。
稀释比例：不可加水稀释，无需过滤。施工时慢慢搅匀，不可机械搅拌。
施工要求：在5℃~35℃及相对湿度80%以下施工。大风、下雨等恶劣天气应避免施工。

Technical parameters:

Construction method: Special spray
Dilution ratio: Not diluted with water without filtering. Slowly stir in construction, not mechanical agitation.
Construction requirements: 5℃-35℃, relative humidity below 80% construction. Construction of wind, rain and other inclement weather should be avoided.

典型方案：（平面造型）

Typical scenario: (graphic)



- ① 基层一：厦光柔性中层腻子2道
 - ② 基层二：厦光柔性面层腻子1道
 - ③ 底层：厦光抗碱封闭底漆1道
 - ④ 中涂：厦光岩彩石中涂漆2道
 - ⑤ 主材：厦光AME岩彩石涂料2道
 - ⑥ 罩面：厦光罩面涂料1-2道
- ① The grass-roots level: light flexible PuTTY for middle-level 2
② Lime: 1 flexible surface light PuTTY road
③ Bottom: alkali-resistant primer 1
④ Coating: painted in light colored rock rocks 2
⑤ Main material: HA AME light colored rock stone paint 2
⑥ Cover: HA mask paint 1-2 road

